

Fig. 2 1968 USA - The Peak in USA Coronary Heart Disease mortality coincides with the Nadir of Mg availability in the USA food supply

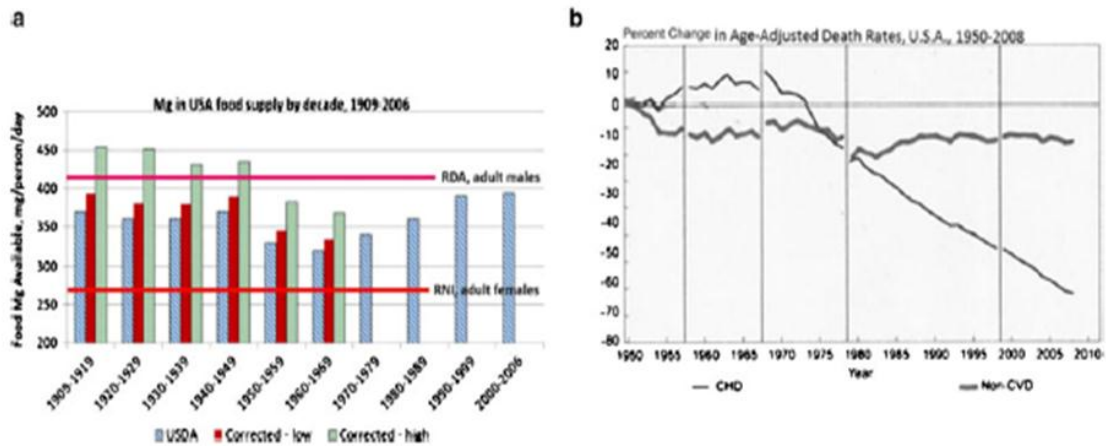


Fig. 4 Coronary Heart Disease (CHD) mortality peak in USA coincides with nadir of USA Mg in food supply. **a** Mg in USA food supply per capita per day by decade, 1909-2006, with recalculation using crop %Mg declines summarized in Tables 2 and 3. USDA data from Genior et al. 2004 and Hiza and Bente 2011:

Data recalculated with data from Fan et al. 2008; Ficco et al. 2009; Murphy et al. 2008; White and Broadley 2005; Davis 2009; Rosanoff 2012 (unpublished). **b** Change in age adjusted death rates for cardiovascular (CHD) and non-cardiovascular diseases, USA, 1950-2008. Adapted, with permission (NIH 2012)